

GENERAL DESCRIPTION OF THE AREA / SITE(S) TARGETED BY THE PROJECT

Name of the project area: Burgundy

Surface area (ha): Overall area of the “AOC” vineyard : 25000 Ha, Targeted demonstration sites 1500 ha. The targeted demonstration sites, where actions will be focusing, have been selected to be representative of the overall Burgundy:

- Fuissé, Solutré-Pouilly, Vergisson and Chaintré, in the south
- Aloxe-Corton, Pernand-Vergelesse and Ladoix – Serrigny in the central area
- Irancy in the northern part

EU protection status: SPA NATURA 2000 Code :
 pSCI NATURA 2000 Code :

Other protection status according to national or regional legislation: none

Main land uses and ownership status of the project area:

This project site is private owned and its participation to the project will be on a voluntary basis.

The project area is composed mostly by private vines, the rest being urban areas and forests.

Scientific description of project area:

The Burgundy area is very large because it has a total area of over 190 000 ha, spread over three departments (Cote d'Or, Saone et Loire and Yonne). Its uniqueness is that it extends over 170km from north to south, with one area (Chablis) (geographically detached in the northwest. This large range implies a large variation in climate and landscape.

The landscape is fairly well balanced between different landscape elements, with the vineyards mainly concentrated in the plains and on the hillsides (coteaux) occupying 12% of the territory (23500 ha) but locally very dominant (see map). .

At the top of these hills and higher areas, forest and sparse vegetation are present, representing 50% of the land of the area, cereal and vegetable crops (which represent 30% of the land use) appear to form a landscape mosaic with natural landscape elements and sometimes viticulture.

The project area is characterized by low altitude variations (between 200 and 500 m) which are a result of alpine orogeny. These hills present a huge variety of limestone soils, which results in a very high diversity of terroirs, locally called “climats”.



Fig1 : The different soil and limestone layers in the “Colline de Corton” area (J.Y. Bizot, 1992)

Importance of the project area for biodiversity and/or for the conservation of the species / habitat types targeted at regional, national and EU level:

Since the wine growers are already working on the topic of biodiversity and landscape value since 2009 (studies on arthropods with ARD-VD, candidate site for UNESCO world heritage rating, ...), they show a huge interest and motivation in joining the BioDiVine project. Even without being included in the program the Burgundy region has already started RBA protocol and detailed mapping at the area of Corton.

Moreover, the Burgundy wine-growing area is a world-renowned. Its implication in such a project should have a positive influence on other wine-growing areas at a national and international level.

The Burgundy area contains a large fraction of plots exposed to soil erosion. Soil management is mainly by tillage. Ground cover approaches should also take this aspect into account.

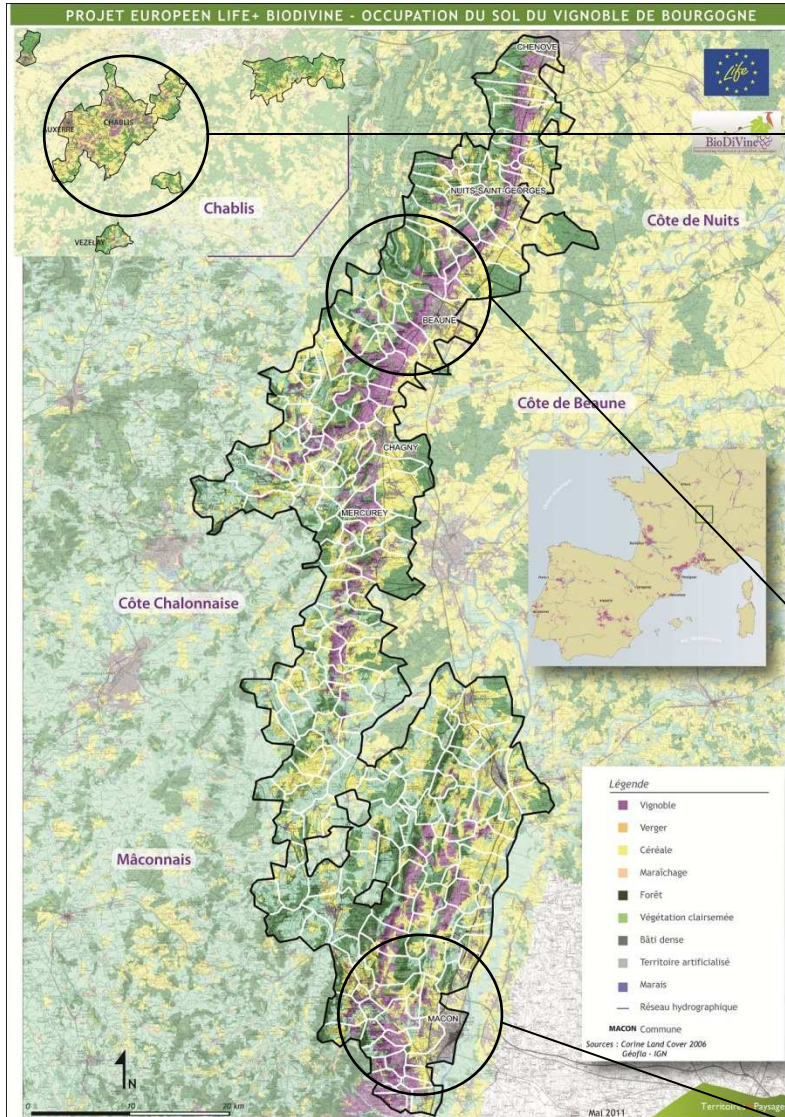
Climate in the Burgundy area is mainly oceanic to semi-continental. Winters are cold and summers are warm, making grape growing possible. Annual rainfall is high (750 mm).

This makes the site interesting for this project since it represents the more northern areas of 'cold climate' wine grape growing where vineyards are often implemented on well exposed steep slopes (Burgundy, Champagne, Alsace, Mosel and Rhine areas).

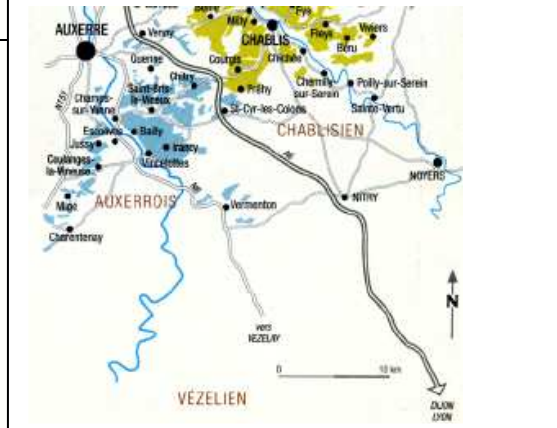
Concrete conservation actions foreseen in Burgundy are : A2 (cartography study), A3 (scientific features study), C1 (introduction of ground covers), C2 (introduction of hedges), C3 (restoration of low walls), C4 (use of pheromones), C5 (introduction of grainlands), E3 (monitoring and evaluating actions: implementation of traps and analysis of capture results).

BURGANDY DEMONSTRATION SITE

LIFE+ Nature & Biodiversity 2009- B2b



Irancy, Cravant, Vincelottes vineyards
160 ha



Aloxe-Corton, Ladoix Serrigny,
Pernand Vergelesse vineyards
1000 ha

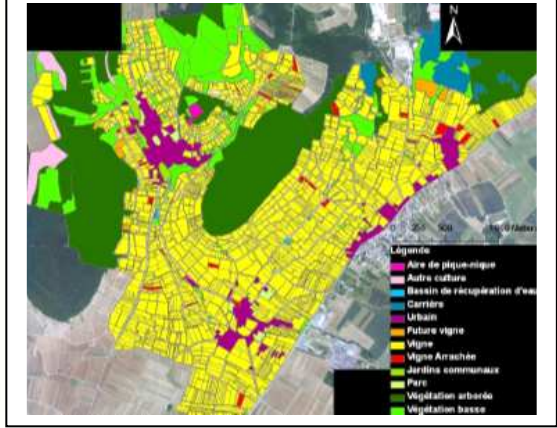


Fig1: Overall appellation of Burgandy, with the three sites targeted by the project

Fuissé, Solutré-Pouilly, Vergisson et
Chaintré
757 ha

